



MEETING SUMMARY

ASCO 2019, Chicago, USA

Dr. Robin L. Jones

**Royal Marsden Hospital, Institute of Cancer Research,
London, UK**

HIGHLIGHTS ON SARCOMA



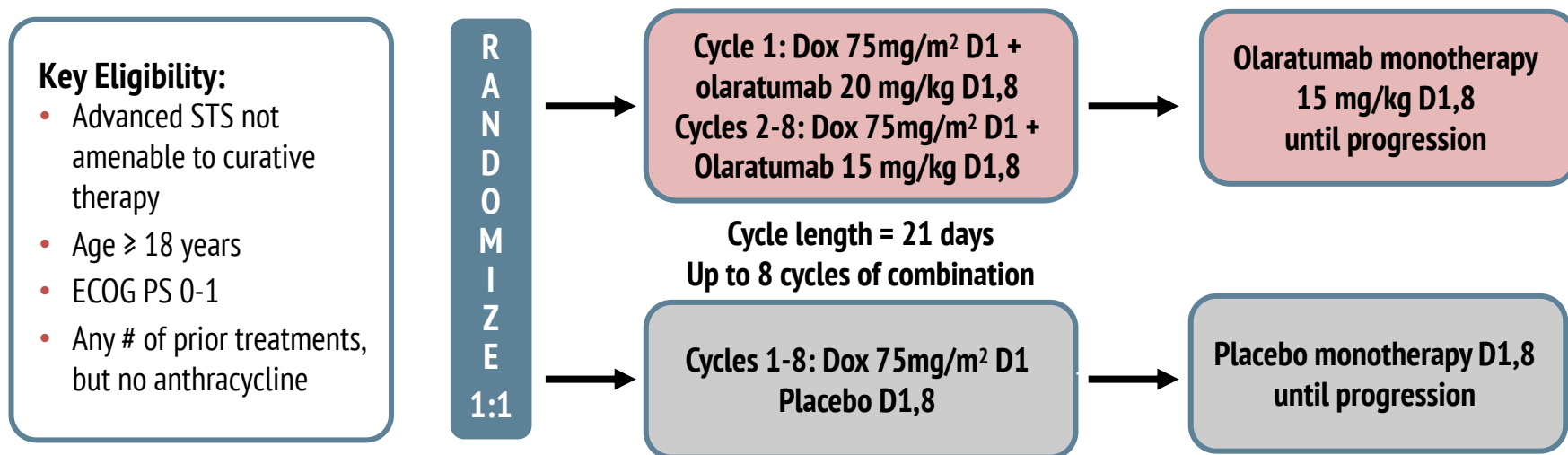
DISCLAIMER

Please note: The views expressed within this presentation are the personal opinions of the author. They do not necessarily represent the views of the author's academic institution or the rest of the SARCOMA CONNECT group. This content is supported by an Independent Educational Grant from Bayer.

**ANNOUNCE: A RANDOMIZED, PLACEBO-
CONTROLLED, DOUBLE-BLIND, PHASE III
TRIAL OF DOXORUBICIN + OLARATUMAB
VS DOXORUBICIN + PLACEBO IN PATIENTS
WITH ADVANCED SOFT TISSUE SARCOMAS**

Tap W, et al. ASCO 2019 Abst #LBA3

ANNOUNCE STUDY DESIGN



Stratification factors: Number of prior therapies (0 vs \geq 1), histology (LMS vs LPS vs UPS vs Other), ECOG PS (0 vs 1)

Primary endpoint: OS in the total STS & LMS populations

Key secondary endpoints: PFS, ORR, PROs, safety, PK, immunogenicity

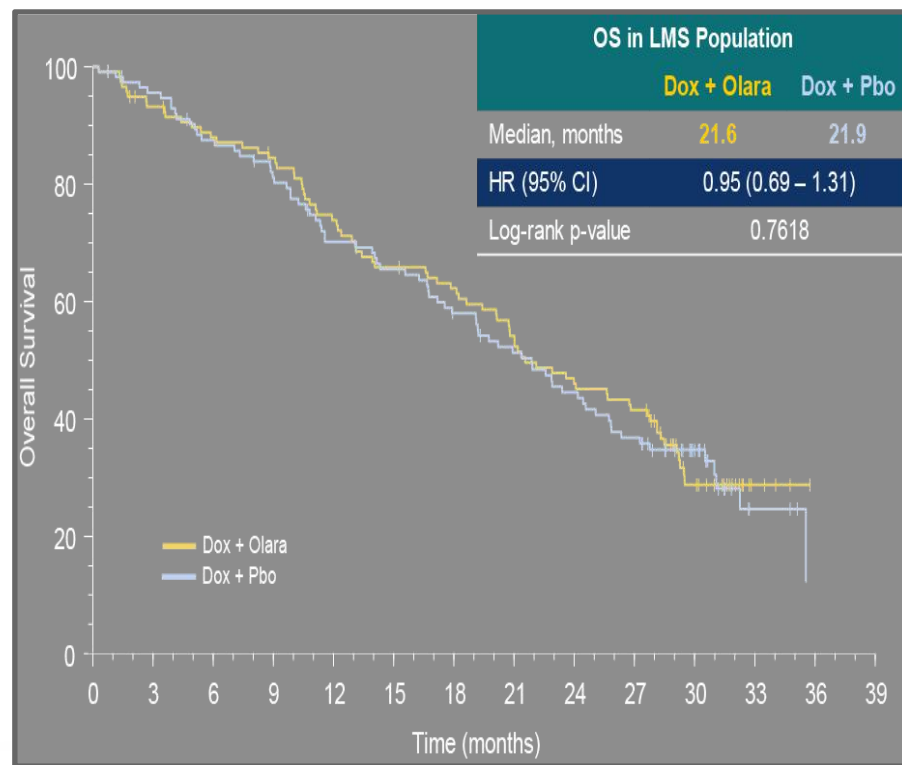
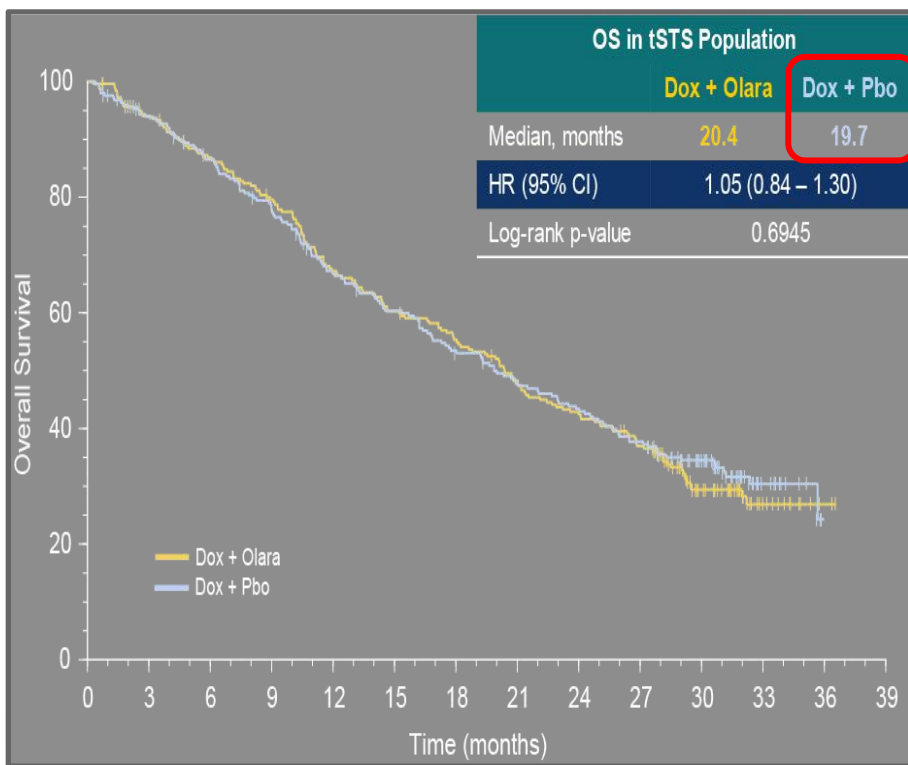
Exploratory: Biomarkers, subgroup analyses

Other features: Dexrazoxane use allowed at any cycle, cardiac monitoring of LVEF prior to cycles 5, 7, & 9 then q3 months

D, day; Dox, doxorubicin; ECOG PS, Eastern Cooperative Oncology Group performance status; LMS, leiomyosarcoma; LVEF, left ventricular ejection fraction; ORR, objective response rate; OS, overall survival; PFS, progression-free survival; PK, pharmacokinetics; PRO, patient-reported outcomes; q, every; STS, soft tissue sarcoma; UPS, undifferentiated pleomorphic sarcoma

Tap W, et al. presented at ASCO 2019, Abst. #LBA3

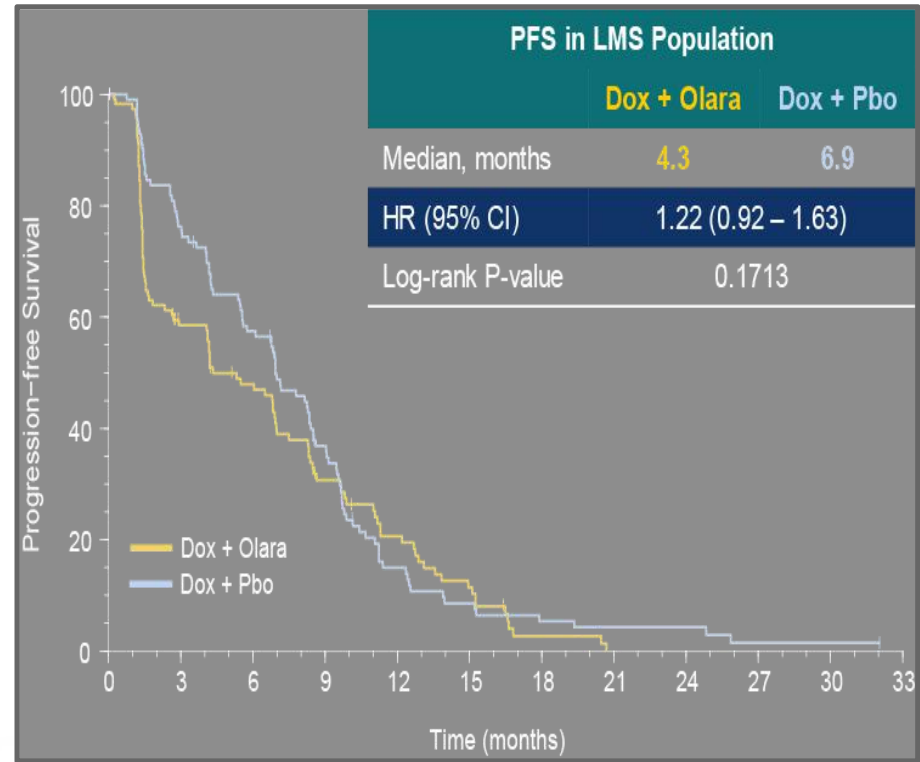
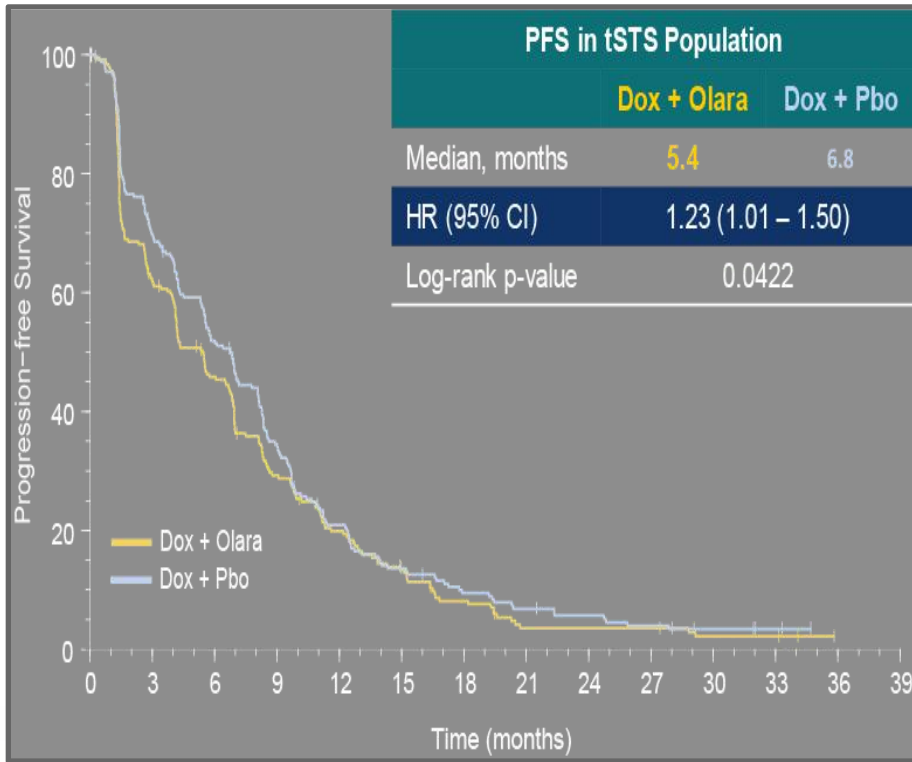
OVERALL SURVIVAL: tSTS AND LMS POPULATIONS



CI, confidence interval; Dox, doxorubicin; HR, hazard ratio; LMS, leiomyosarcoma; Olara, olaratumab; OS, overall survival; Pbo, placebo; tSTS, total Soft Tissue Sarcoma

Tap W, et al. presented at ASCO 2019, Abst. #LBA3

PROGRESSION-FREE SURVIVAL: tSTS AND LMS POPULATIONS



CI, confidence interval; Dox, doxorubicin; HR, hazard ratio; LMS, leiomyosarcoma; Olara, olaratumab; Pbo, placebo; PFS, progression-free survival; tSTS, total Soft Tissue Sarcoma

Tap W, et al. presented at ASCO 2019, Abst. #LBA3

ANNOUNCE TRIAL TAKE HOME MESSAGES

- ANNOUNCE failed to meet the primary endpoint of OS in STS histologies or the LMS population
 - Benefit seen in phase Ib/II trial was not confirmed
- The control arm had the highest OS for doxorubicin in any randomized STS trial
 - Entry not limited to first line and allowed up to 600 mg/m² doxorubicin
- No new patients to be started on olaratumab

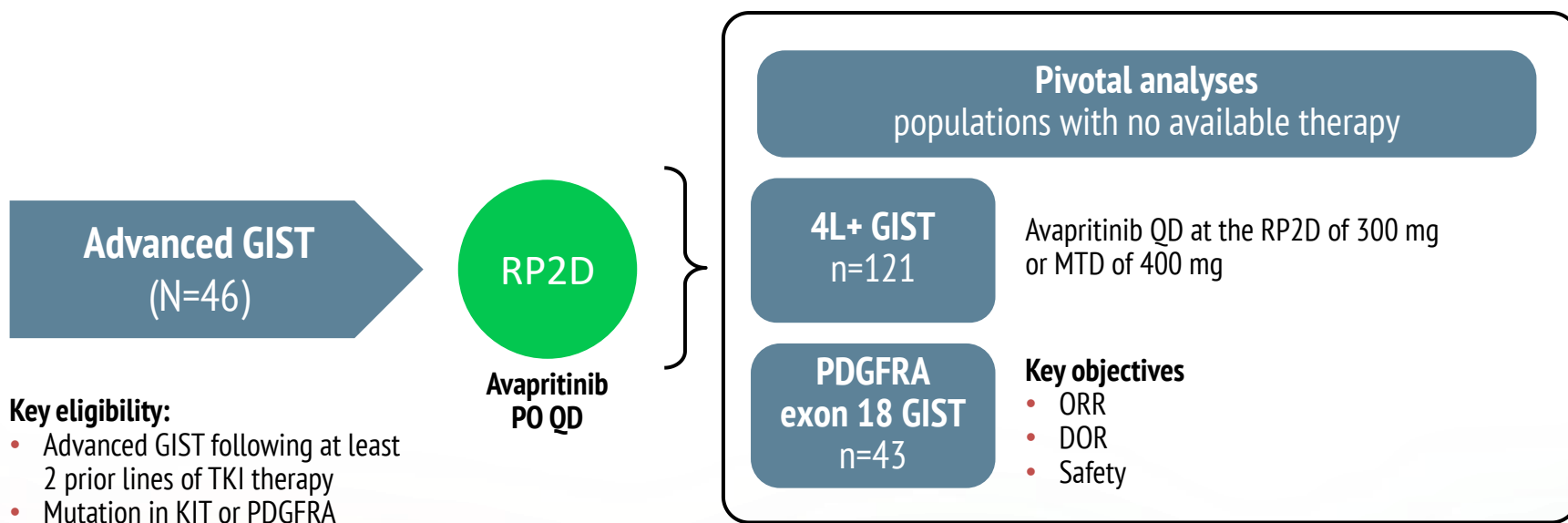
**CLINICAL ACTIVITY OF AVAPRITINIB
IN $\geq 4^{\text{TH}}$ LINE (4L+) AND PDGFRA
EXON 18 GASTROINTESTINAL
STROMAL TUMORS (GIST)**

Heinrich M, et al. ASCO 2019, Abst. #11022

PHASE I STUDY IN GIST: THE NAVIGATOR TRIAL

- NAVIGATOR is an open-label dose escalation/dose expansion phase I study of avapritinib (NCT02508532)

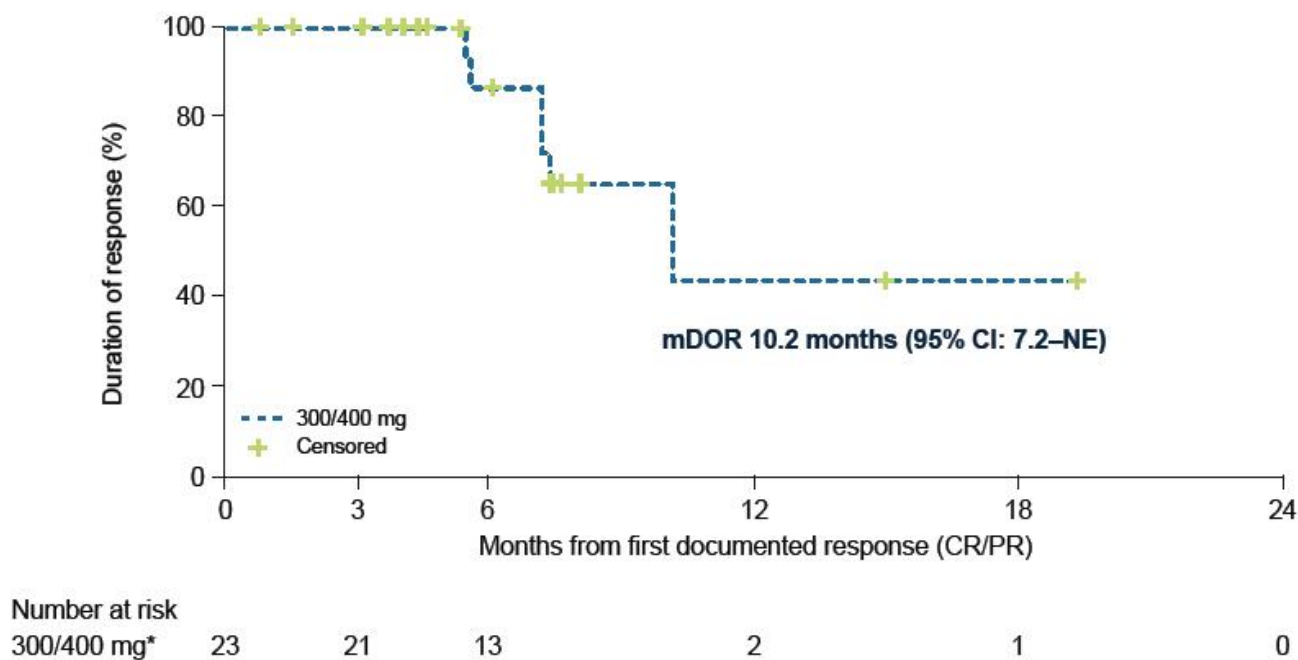
Study design, amendments, and objectives



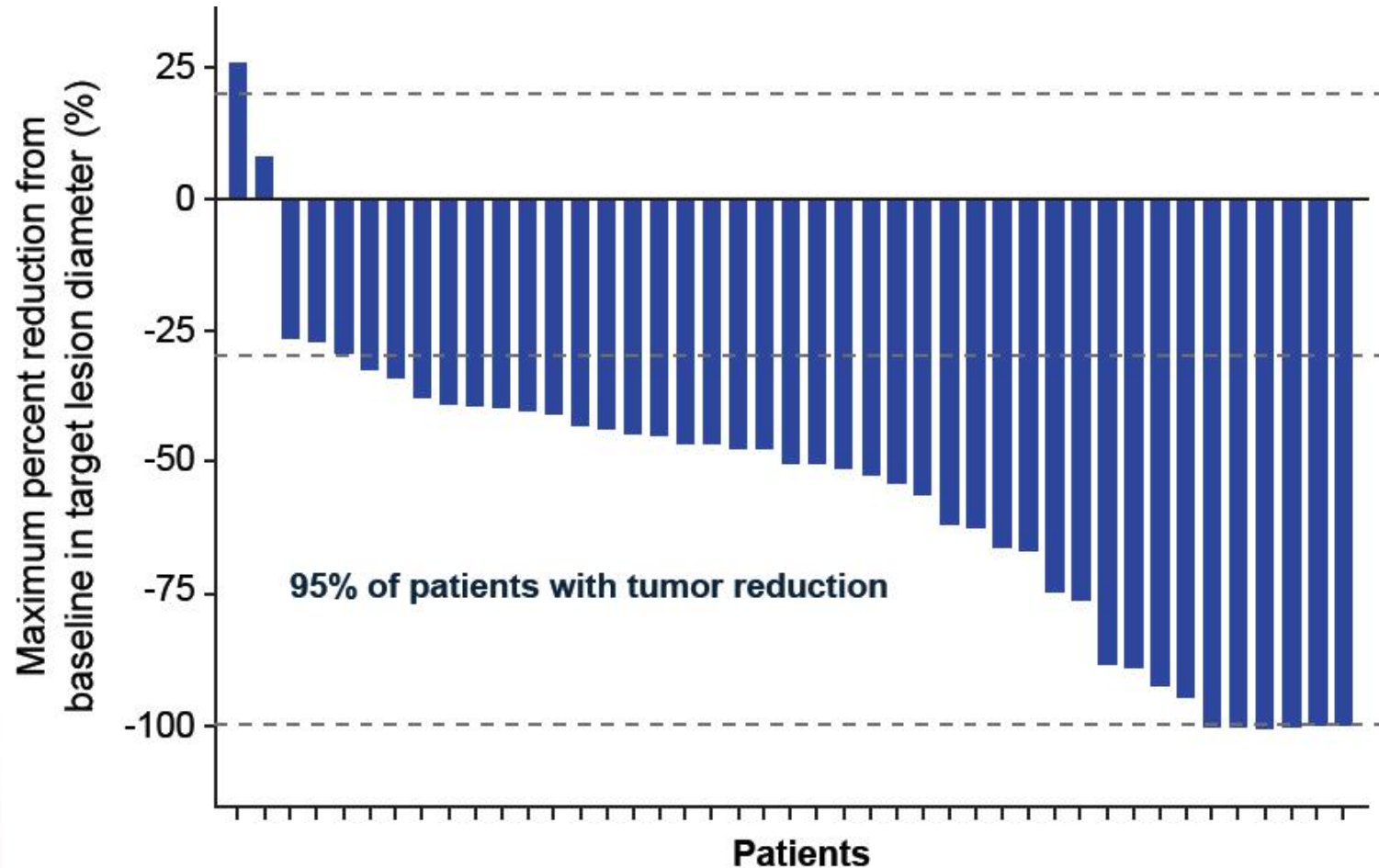
*While enrollment criteria in the study protocol specified that patients in expansion group 1 were required to have received only at least 2 prior lines of TKI therapy, equating to an analysis population of 3L+, the observed enrollment more greatly reflected a population more heavily pretreated.

PATIENTS TREATED IN 4TH LINE +

- Median follow-up was 10.8 months across all 4L+ patients



PATIENTS WITH TUMORS HARBORING PDGFRA D842V MUTATION



ADVERSE EVENTS STRATIFICATION

Most Common AEs Occurring in ≥15% of Patients % (n)	300/400 mg Starting Dose (N=204)			
	All AEs		Treatment-related AEs	
	All grades	Grade ≥3	All	Grade ≥3
Nausea	64.2 (131)	2.5 (5)	59.3 (121)	-
Fatigue	55.4 (113)	7.4 (15)	47.1 (96)	6.4 (13)
Amemia	50.0 (102)	28.4 (58)	36.3 (74)	16.2 (33)
Cognitive effects*	41.2 (84)	3.9 (8)	41.2 (84)	3.9 (8)
Periorbital edema	40.7 (83)	-	40.2 (82)	-
Vomiting	38.2 (78)	2.0 (4)	31.9 (65)	-
Decreased appetite	37.7 (77)	2.9 (6)	28.4 (58)	-
Diarrhea	37.3 (76)	4.9 (10)	31.9 (65)	2.9 (6)
Increased lacrimation	32.8 (67)	-	30.4 (62)	-
Peripheral edema	30.9 (63)	-	27.0 (55)	-
Face edema	24.5 (50)	-	24.0 (49)	-
Constipation	22.5 (46)	-	-	-
Dizziness	22.1 (45)	-	-	-
Hair color changes	21.1 (43)	-	20.6 (42)	-
Blood bilirubin increased	21.1 (43)	4.4 (9)	18.6 (38)	3.9 (8)
Abdominal pain	20.1 (41)	5.4 (11)	-	-
Headache	16.7 (34)	-	-	-
Dyspnea	16.7 (34)	2.5 (5)	-	-
Dyspepsia	15.7 (32)	-	-	-
Hypokalemia	15.7 (32)	2.9 (6)	-	-
Dysgeusia	15.2 (31)	-	15.2 (31)	-

*Cognitive effects include pooled terms of memory impairment (29.4%), cognitive disorder (10.8%), confusional state (7.4%), and encephalopathy (1.5%). The sponsor considered all cognitive effect AEs as treatment-related in this analysis.

Note: 3 events of intracranial hemorrhage occurred, 1 at the 90 mg dose level; 2 were grade 3, 1 was grade 1. AEs are sorted by decreasing incidence in the All AEs All grades group. All grades AEs occurring in ≥15% of patients. Grade ≥3 AEs occurring in ≥2% of patients.

AEs, adverse events

Heinrich M, et al. presented at ASCO 2019 Abst. #11022

A RANDOMIZED PHASE II TRIAL OF NIVOLUMAB MONOTHERAPY VS NIVOLUMAB + IPIILIMUMAB IN ADVANCED GIST

Singh AS, et al. ASCO 2019, Abst. #11017

TOPLINE STUDY RESULTS

Study population (NCT02880020)

- 29 patients (27 evaluable)
- Median of 3 (1-7) lines of prior therapies

Efficacy Outcomes

- Nivolumab arm
 - 8/16: best response of SD for a CBR of 50.0%
 - Median PFS 12.1 weeks
 - 6 grade 3/4 AEs (hyperglycemia, DKA, weakness 2x, abdominal pain, rash)
- Nivolumab + ipilimumab arm
 - 1/13 had a PR and 2/13 SD for a CBR of 23.1%
 - Median PFS of 8.3 weeks
 - 6 Grade 3/4 AEs (diarrhea 3x, weakness, hyperglycemia, AST elevation)
- 8 patients on therapy >6 months
- 2 patients with a KIT Exon 17 mutation had radiographic disease shrinkage

Safety Outcomes

- Most AEs were grades 1-2 with fatigue (37%) being the most common

APATINIB PLUS CAMRELIZUMAB (SHR-1210) FOR UNRESECTABLE HIGH-GRADE OSTEOSARCOMA (APFAO) PROGRESSING AFTER CHEMOTHERAPY: A PROSPECTIVE, OPEN LABEL, PHASE II TRIAL

Xie L, et al. ASCO 2019, Abst. #11013

TOPLINE STUDY RESULTS

- JAN 1 – Sep 4, 2018: 41 patients

Efficacy Outcomes

- Objective response rate: 21.95% (9/41)
- 20/ 41 patients (48.8%, 95%CI: 32.8%-64.8%) progression free at 6 months
 - 6-month PFS rate: 54.32% (95% CI 37.62%-68.33%)
 - 4-month PFS rate: 70.00% (95% CI 53.24%–81.73%)
- Median PFS: 6.50 (95% CI 4.23–7.50) months
- Median OS: not reached
- No statistical difference in response rate or PFS between different PD-L1 expression groups ($P=0.153$ and 0.231)

Safety Outcomes

- Toxic effects led to dose reductions, or short interruptions, or both in 20/ 41 patients (48.78%)



The CONNECTS
Bodenackerstrasse 17
4103 Bottmingen
SWITZERLAND

Dr. Antoine Lacombe
Pharm D, MBA
Phone: +41 79 529 42 79
antoine.lacombe@cor2ed.com

Dr. Froukje Sosef
MD
Phone: +31 6 2324 3636
froukje.sosef@cor2ed.com

